



Material:

Housing: 30% Glass filled PBT UL94V-0

Contacts: Brass

Plating: Selective gold plated: gold plated on mating area and nickel plated on wire cutting area

Gold plated: 2u" over 50u" nickel

Tin plated: 100u" over 50u" nickel

Electrical Characteristics:

Current Rating: 1 AMP

Insulator Resistance: 5000MΩmin. at DC 500V

Contact Resistance: 20mΩmax. at DC 100mA

Operating Temperature: -55 ~+105

Features:

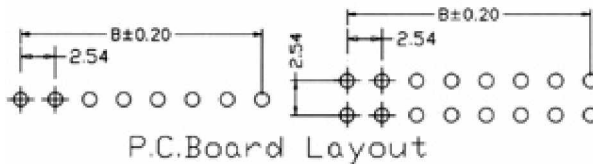
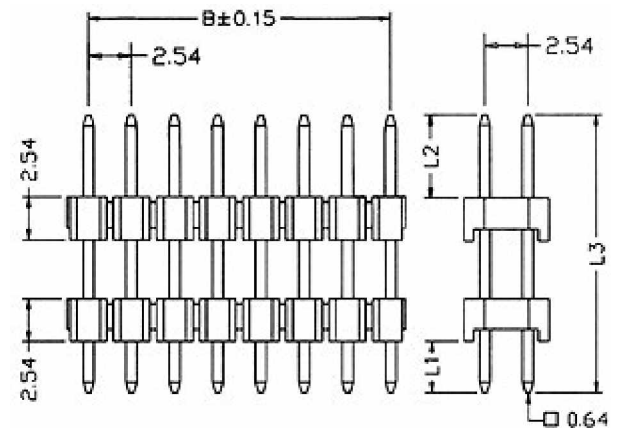
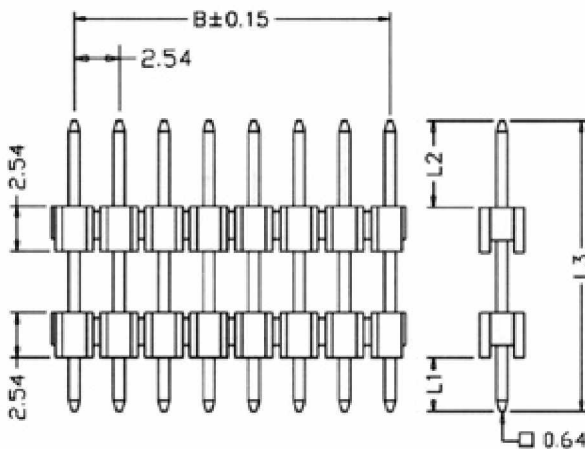
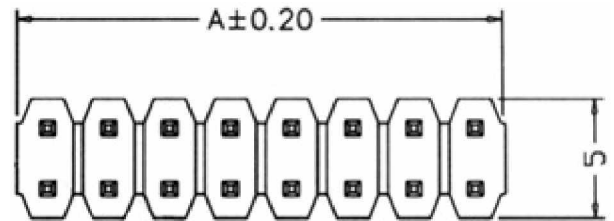
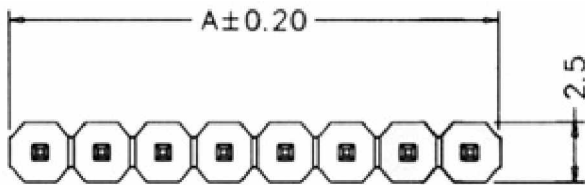
- * Dual insulators offer high versatility.
- * Side-to-side and end-to-end stackable.
- * Custom design provides excellent products flexibility,

Yueqing shi kaifa electronic co.,ltd

Tel: 0086-13634204680

<http://www.china-electrical-supplier.com>

master@china-electrical-supplier.com



Position	4 Thru 80
Dimension	
A	2.54xNo.of Positions
B	2.54xNo.of Positions-2.54

Ordering information

ZP 115- ☐ ☐ ☐ ☐ ☐

Series No.of 0:Selective Gold plated 0:Straight 0:Black

Pin Count 1:Tin plated 1:Right Angle 1:Grey

*L1:Dip Length L2:Mating Length L3:Overall Length